

Tiffany Favrile Pottery and the Quest of Beauty through January 31, 2011

NEW YORK , New York – 25 January 2011

(ArtfixDaily.com) As the exhibition of Tiffany Favrile Pottery at Lillian Nassau LLC enters its final week, gallery owner, Arlie Sulka, reports that the response to the unprecedented display of 60 examples of Tiffany Favrile Pottery has been overwhelming. Favorably reviewed both by Eve Kahn for the *New York Times*, November 12, 2010, and Regina Kolbe, for the *Antiques and the ArtsWeekly*, January 7, 2011, the show continues to attract the attention of museum curators, collectors and art pottery enthusiasts.

The exhibition, the first major display and sale of Tiffany Favrile Pottery ever held in a private gallery, was mounted in conjunction with the publication of *Tiffany Favrile Glass and the Quest of Beauty*, Lillian Nassau LLC's second book written by eminent Tiffany scholar, Dr. Martin Eidelberg. Sulka and Eidelberg worked together for over three years in preparation for this landmark exhibition. While Sulka strove to acquire a wide range of examples of Tiffany Favrile Pottery, Eidelberg's research took him to Denmark where he uncovered information about the first manager of the pottery division, Edith Lautrup.

In addition to the pottery offered for sale by the gallery, other superb examples have been lent by nine private collectors, who purchased most of their Tiffany Favrile Pottery directly from Lillian Nassau. These collectors are thrilled to participate in the show and to have their objects illustrated in the book, a hardcover publication featuring over 120 illustrations as well as a shape book at the back of the book indexing over 300 designs issued by Tiffany Studios.

"While we have already sold vases to several Museums and private collectors, we still have some exceptional examples available. We encourage anyone who has not seen the show to visit the gallery and of course, invite those who have already been at the gallery to come back," says Sulka.

The last day of the exhibition will be January 31, 2011.

Gallery Hours: Monday-Friday, 10AM-5PM and Saturday, 10:30AM-5PM

220 East 57th Street

New York, New York 10022

Telephone: 212 759-6062

Information: www.lilliannassau.com

About Lillian Nassau LLC:

Lillian Nassau LLC, world-renown specialists in Tiffany Studios lamps, Tiffany Studios favrile glass, Tiffany Studios favrile pottery, Tiffany Studios mosaics, Tiffany Studios windows, Tiffany Studios desk pieces and Louis C. Tiffany paintings celebrates its 65th anniversary. Acquired in October, 2006, by long-time Managing Director, Arlie Sulka, Lillian Nassau LLC continues to dominate the field with its expertise and scholarship in Tiffany Studios.

Press Contact:

arlie sulka

lillian.nassau.llc

212 759-6062

info@lilliannassau.com



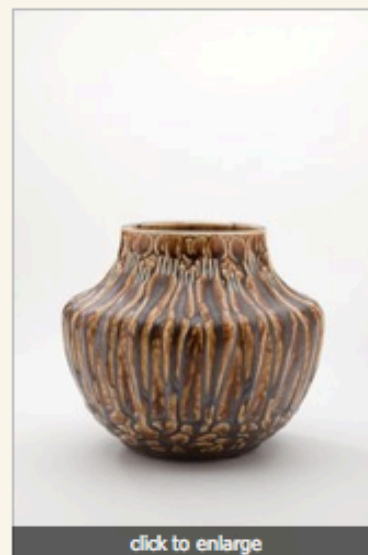
[click to enlarge](#)

Tiffany Favrile Pottery Jack-in-the-Pulpit Vase
(Lillian Nassau LLC)



[click to enlarge](#)

Tiffany Favrile Pottery Artichoke Vase in Bud Form
(Lillian Nassau LLC)



[click to enlarge](#)

Tiffany Favrile Pottery Vase with Forest Plants
(Lillian Nassau LLC)